



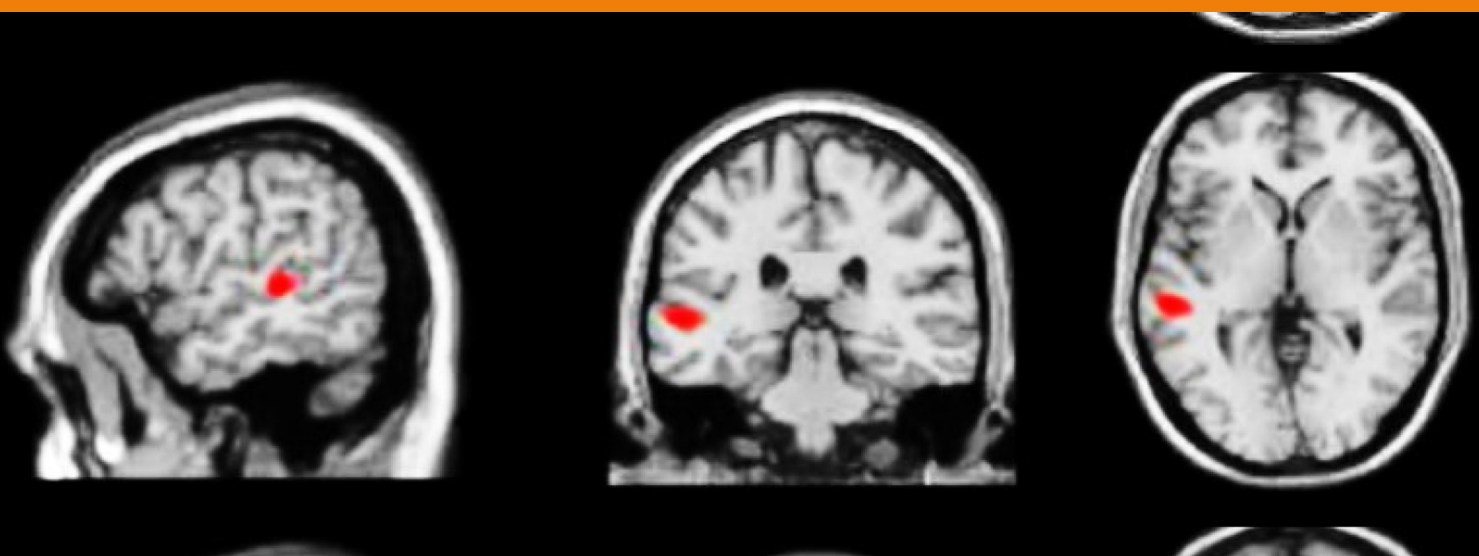
# Participants Needed!

## Explaining Language Outcome and Recovery After Stroke (ELORAS)

We use functional magnetic resonance (fMRI) to improve our understanding of the neural systems that support speech and language in the healthy brain and following brain injury.

Inside the scanner, volunteers have a structural brain scan (10 minutes) and complete 13 x 3 minute language tasks including naming pictures of objects and reading words (with breaks in-between).

Contact The PLORAS Research Team at [ploras@ucl.ac.uk](mailto:ploras@ucl.ac.uk) / 020 7813 1538 with your name, email address and contact number to take part.



# About the study

## Who can take part?

We're looking for volunteers who fit the following criteria:

- Aged over 40 years – the older the better!
- A native English speaker
- Have no neurological diagnoses
- No contraindications for having an MRI scan (e.g. no metal in their body or large tattoos)

## What can you expect?

### Brain Imaging

The volunteer can see a picture of the structure of their brains, either at the time of the scan or shortly afterwards. Once we have analysed all the scans, we should be able to indicate which parts of the brain are used for seeing, hearing, speaking and understanding words.

We are scanning from May to August at the Wellcome Centre for Human Neuroimaging, 12 Queen Square, London, WC1N 3AR. The exact time and date, during these months, can be chosen to suit the volunteer.

### Reimbursement

We give £15 for each hour volunteers spend at our research centre.

Contact [ploras@ucl.ac.uk](mailto:ploras@ucl.ac.uk) with your name, email address and contact number to take part.

Visit [www.ucl.ac.uk/ploras/](http://www.ucl.ac.uk/ploras/) for more information.

